

PUBLIC AUCTION

(Subject to conditions of sale and unless sold previously)
To be held at

The Rasoi Indian Kitchen (Formerly The Glamorgan Arms) Pontlliw, Swansea, SA4 9DY
On

Thursday 30th September 2021 at 3 p.m.

This is a business event and strict current covid restrictions must be followed - Genuine interested parties only to attend with one person from each household. Face masks must be worn and social distancing adhered to. Prospective purchasers must register with the Auctioneers prior to attending the sale. The sale will be held outdoors (Indoors if restrictions permitted)

To Include:



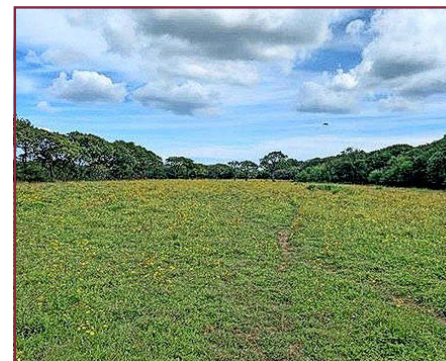
LOT 1

2.25 acre field at Berth Farm, Trimsaran, Kidwelly, Carmarthenshire SA17 4EN

A rare opportunity to purchase this sheltered 2.25 acre gently sloping improvable field currently utilised for grazing of horses and offering scope to be brought back into agricultural production with direct gated access from the unclassified highway.

GUIDE PRICE
£12,500

SOLICITORS
RDP Law, Wentwood House, Langstone Business Village, Newport NP18 2HJ



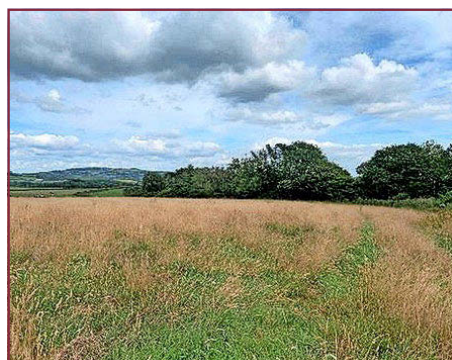
LOT 2

38.65 acres at Berth Farm, Trimsaran, Kidwelly, Carmarthenshire SA17 4EN

A block of grazing land amounting to 38.65 acres contained within a number of easy to manage enclosures currently utilised for grazing of horses offering scope to be brought back into production with direct gated access from the unclassified highway.

GUIDE PRICE
£120,000

SOLICITORS
RDP Law, Wentwood House, Langstone Business Village, Newport NP18 2HJ



LOT 3

6.10 acre field at Berth Farm, Trimsaran, Kidwelly, Carmarthenshire SA17 4EN

An opportunity to purchase this gently sloping 6.10-acre improvable field currently unmaintained for many years and offering scope to be brought back into production with direct gated access from the unclassified highway.

GUIDE PRICE
£30,000

SOLICITORS
RDP Law, Wentwood House, Langstone Business Village, Newport NP18 2HJ



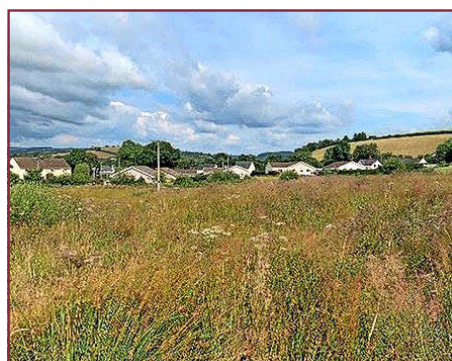
LOT 4

69.82 acres of land and derelict farmstead at Berth Farm, Trimsaran, Kidwelly, Carmarthenshire SA17 4EN

A block of rough ground and improvable pastureland part of which forming within an EIA (Environmental Impact Assessment) and derelict farmstead with dilapidated outbuildings with re-development opportunity (s.t.p) with excellent road frontage.

GUIDE PRICE
£200,000

SOLICITORS
RDP Law, Wentwood House, Langstone Business Village, Newport NP18 2HJ



LOT 5

11.11 acres of land at Llethr Farm, Llanpumsaint, Carmarthenshire

A block of gently sloping rough grazing land being improvable in areas to be brought back into production with the benefit of two gated access points from a shared lane, set on the outskirts of the rural village of Llanpumsaint, suitable for grazing and amenity purposes.

GUIDE PRICE
£30,000

SOLICITORS
Noble Harbour Solicitors, 14C West Street, Gorseinon, Swansea SA4 4AA



LOT 6

18.28 acres of land at Llanedi, Pontarddulais, Carmarthenshire

A block of rough grazing and established amenity broadleaf woodland amounting to 18.28 acres, 4.90 acres of which is a designated SSSI (Site of Special Scientific Interest), with excellent road access directly off the B4297 Llanedi Road, suitable for grazing, amenity and environmental purposes.

GUIDE PRICE
£45,000

SOLICITORS
Noble Harbour Solicitors, 14C West Street, Gorseinon, Swansea SA4 4AA

For sales particulars and further information contact the Auctioneers Office at
Druslyn House, De la Beche Street, Swansea. Tel: 01792 650705